

Contents

Page

Resource 1: Rock Pool Rummage, Diorama	2
Resource 2: Rock Pool Rummage, Sea Creature Cards	3
Resource 3: Rock Pool Rummage, Identification Sheet	4-5
Resource 4: Beach I Spy, Identification Sheet	6
Resource 5: Strictly Beach Art, Ideas for Beach Art	7-8
Resource 6: Wish You Were Here, Historic Postcards	9
Resource 7: Wish You Were Here, Blank Postcards	10-13
Resource 8: The Big Colouring-In Resource	14-18
Resource 9: Go Fly A Kite, Instructions for making a kite	19
Resources 10: Maritime Myths and Local Legends, Five Audio Stories	20
Resource 11: Holiday History, Historic Photographs	21-22
Resource 12: Holiday History, Historic Brochures	23-24
Resource 13: Changing Coasts, Coastal Erosion Explained	25
Resource 14: Changing Coasts, Cliff Formations	26-27
Resource 15: Common Chalk Fossils	28
Resource 16: What's That Ship? Identification Sheet	29



Resource 1: Diorama

Create your own rock pool scene in a box

You will need:

- A shoe box or slightly larger
- Copies of the rock pool creatures from Resource 3.
- Crayons and paint
- Tape
- Thread
- Scissors
- Optional: pipe cleaners for seaweed, glitter for bubbles, thin card to glue the images on to.

How to make your diorama:

- The box is the stage for your rock pool scene.
- Decorate the inside of the box, painting the sides blue for the sea and the base yellow. You could add seashells found on the beach, small pebbles and dried seaweed.
- You could also paint some seaweed shapes on the sides.
- Print out the rock pool creatures from the Resource 3 (you may need to stick these to card to stiffen them)
- Colour the creatures and then hang them with cotton thread from the top of the box.



KS1

KS2

Science

Resource 1: Rock Pool Rummage Diorama



Resource 2: Sea Creature Cards

Card 1

I have tube feet that act like suckers; I can lay two million eggs in two hours; I am spiny skinned; I eat shellfish by opening them with my feet; I have five arms and if one gets damaged I can regrow it.

KS1

KS2

Card 2

I have eyes on the ends of stalks; I can run sideways quickly; I carry my eggs under my tail flap; I have eight legs and two claws; I shed my hard shell as I grow.

Science

Card 3

I have long antennae which help me to spot danger; I shed my skin every two weeks in the summer; I have a transparent body; I escape from predators by moving backwards quickly.

Card 4

I am an animal but look like a flower; I have 200 tentacles that sting; when the tide is out I look like a small blob of jelly; I catch small fish and shrimps which I place whole into my mouth.

Card 5

I have a strong foot which uses suction to keep me stuck tightly to rocks; I only move about 1m from my home base, or 'home scary', to eat seaweed; I eat with my rasping tongue.

Resource 2: Rock Pool Rummage
Sea Creature Cards**Answers**

1. Starfish
2. Crab
3. Prawn
4. Sea anemone
5. Limpet



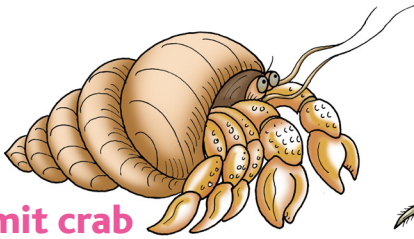
Resource 3: Identification Sheet

KS1

KS2

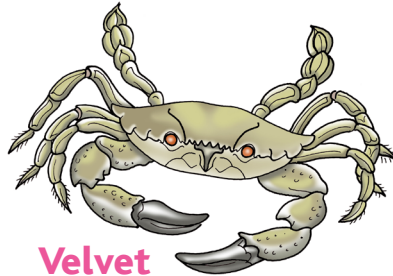
Science

Resource 3: Rock Pool Rummage Identification Sheet



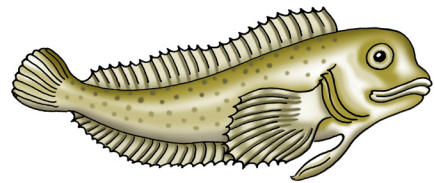
Hermit crab

Body length: up to 3cm. Lives inside empty spiral shells, from winkles to whelks; the crab itself is red-orange.



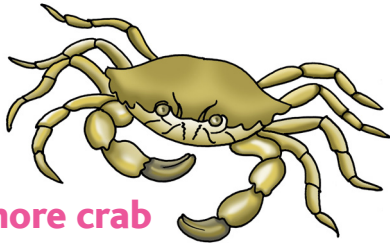
Velvet Swimmer crab

Shell diameter: 8cm. The upper surface is blue with a reddish-brown velvety covering. Colour: red-brown. Last joint of back legs is flat and rounded to act as swimming paddle. Aggressive!



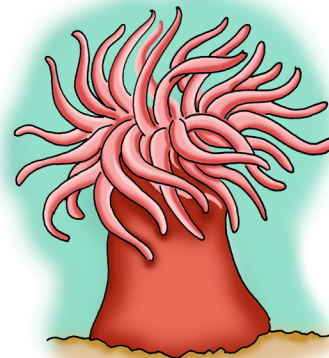
Shanny (also called a common blenny)

Body length: up to 16cm. Blunt head and a long dorsal fin. Hides in crevices.



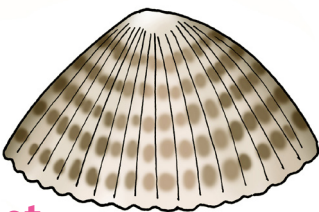
Shore crab

Shell diameter: up to 8cm. The shell has five 'teeth' on each side below the eye. Colour variable, but mostly green.



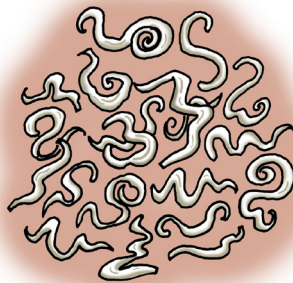
Beadlet anemone

Tentacle length: up to 7cm. Red, brown or green. Tentacles retract into body when exposed at low tide.



Limpet

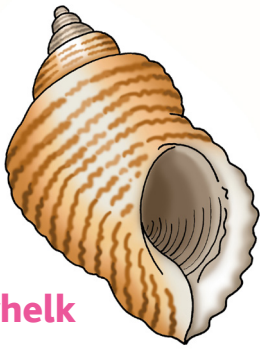
Shell diameter: up to 6cm. Attaches firmly to rocks, creating 'home scars'. Leaves at high tide to graze algae.



Keelworms

White, smooth, curved tubes, 3-5mm long with a worm inside the tube.





Dog whelk

Shell height: up to 4cm. Has a thick rim to the shell mouth. Carnivorous, boring into mussels and barnacles.



Barnacle

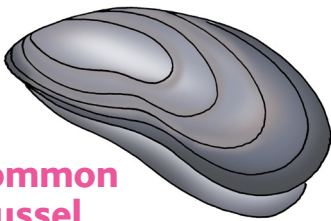
Up to 1.5cm diameter.
Colour: white to dirty grey.



Purple top shell

Similar to the Grey top shell. The Purple top Shell has just reached Thanet from SW England coastline in the last 10-15 years and is now on most beaches. It is a likely indicator of warmer seas - global warming!

Shell height: up to 1.5cm. Greyish, conical shell with fine reddish or purple markings. In lower pools.



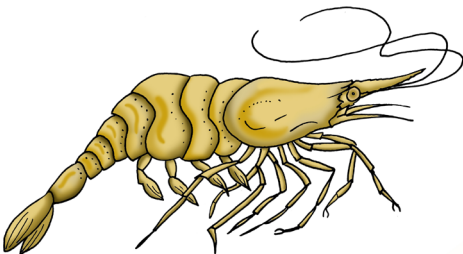
Common mussel

Shell length: up to 10cm. Flattened, oval, bluish-black shell. Lives in tightly clustered colonies on rocks.



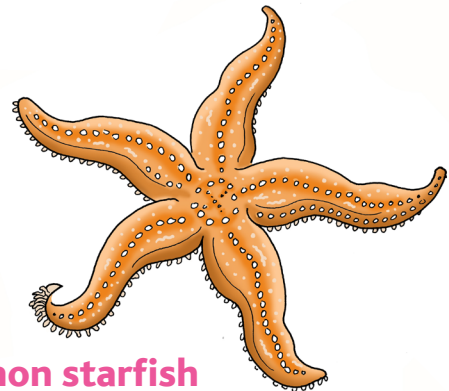
Grey top shell

Shell height: up to 1.5cm. Greyish, conical shell with fine reddish or purple markings. In lower pools.



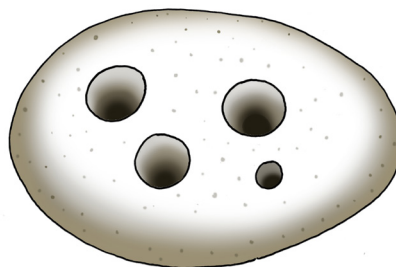
Prawn

Body length: up to 11cm. Transparent body with fine brown markings. Darts into crevices and seaweed.



Common starfish

Leg span: up to 30cm, but rockpool specimens are usually smaller. Five limbs are orange with paler stipples.



Piddock burrow holes

Piddock holes made in pieces of chalk.



Resource 4: Identification Sheet

Use this sheet to help identify some of the objects you might find along the strandline. The strandline is a line left on the beach by the high tide. It is often a line of seaweed and other materials that are washed up onto the beach by the tide.

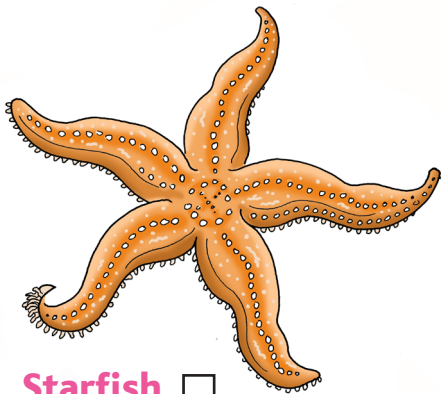
Remember, if you are not sure about something – DON'T PICK IT UP!

KS1

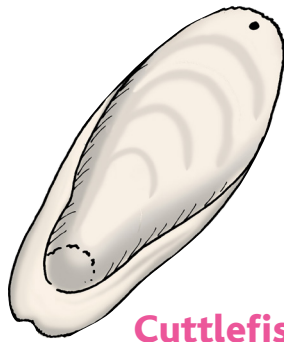
KS2

Science

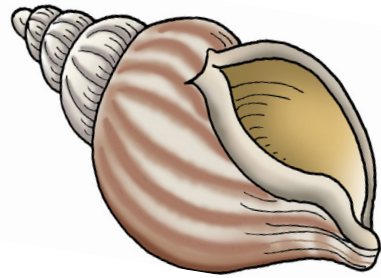
Resource 4: Beach I Spy
Identification Sheet



Starfish



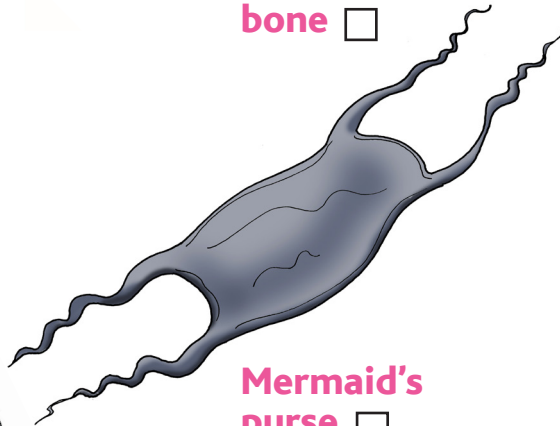
Cuttlefish bone



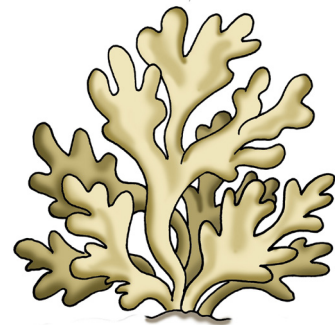
Whelk shell



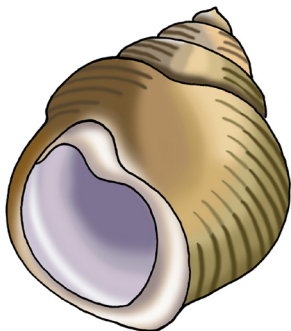
Gull feather



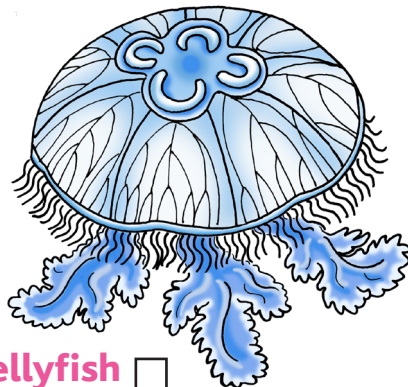
Mermaid's purse



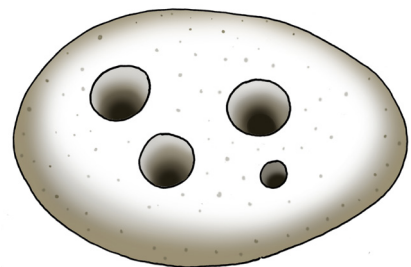
Hornwrack



Edible Periwinkle



Jellyfish

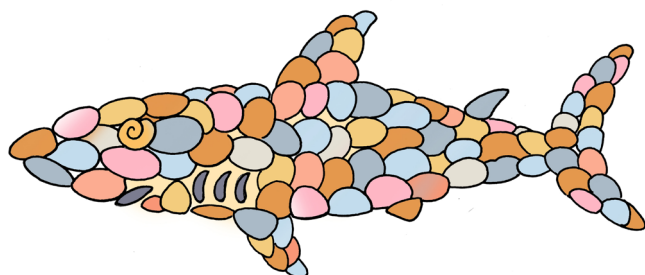


Piddock
burrow holes



Resource 5: Ideas for Beach Art

Here are some ideas for making your own beach art. They illustrate the use of a variety of materials including seaweed, shells and pebbles.



KS1

KS2

Art

Resource 5: Strictly Beach Art
Ideas for Beach Art



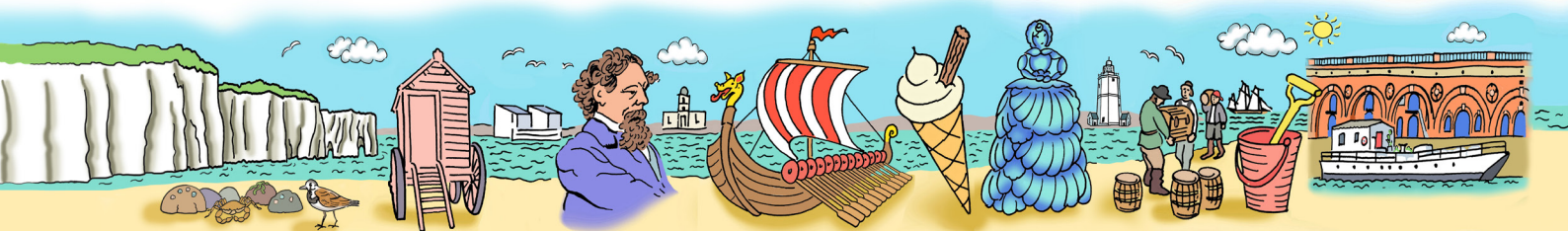
Resource 5: Ideas for Beach Art

KS1

KS2

Art

Resource 5: Stictly Beach Art, Ideas for Beach Art

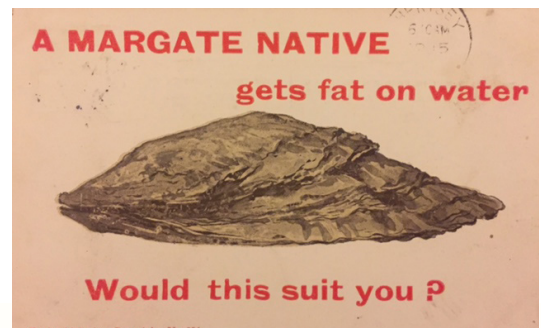
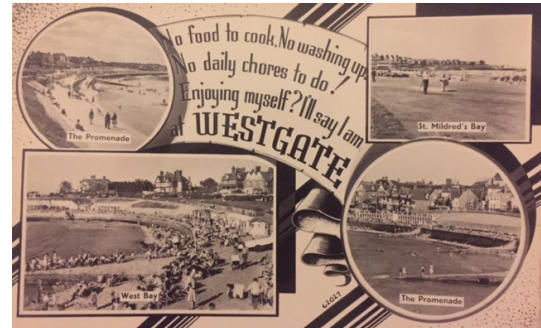


Resource 6: Historic Postcards

Here are some design ideas for postcards. There are also some template designs for you to photocopy and use to add your own photographs or drawings. Children could also come up with their own ideas for a novelty seaside postcard.

KS2

Art

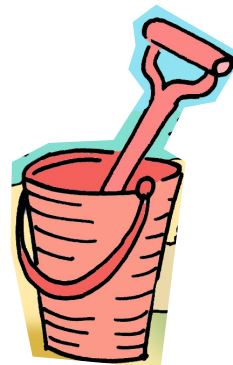


Resource 6: Wish You Were Here
Historic Postcards



Resource 7: Blank Postcards

Greetings from Margate



KS2

Art

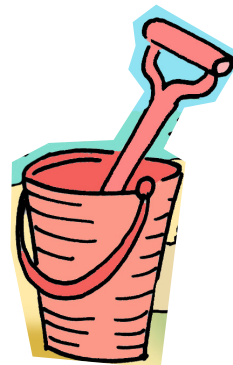
Resource 7: Wish You Were Here
Blank Postcards

Greetings from Margate



Resource 7: Blank Postcards

Greetings from Joss Bay



KS2

Art

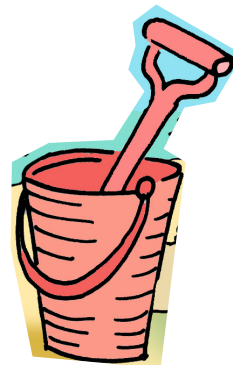
Resource 7: Wish You Were Here
Blank Postcards

Greetings from Joss Bay



Resource 7: Blank Postcards

Greetings from Ramsgate



KS2

Art

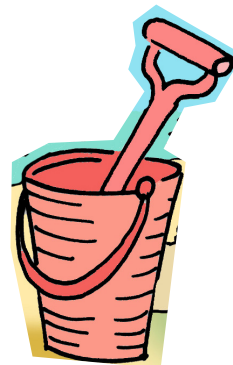
Resource 7: Wish You Were Here
Blank Postcards

Greetings from Ramsgate



Resource 7: Blank Postcards

Greetings from Minnis Bay



KS2

Art

Resource 7: Wish You Were Here
Blank Postcards

Greetings from Minnis Bay



The Big Colouring-In Resource

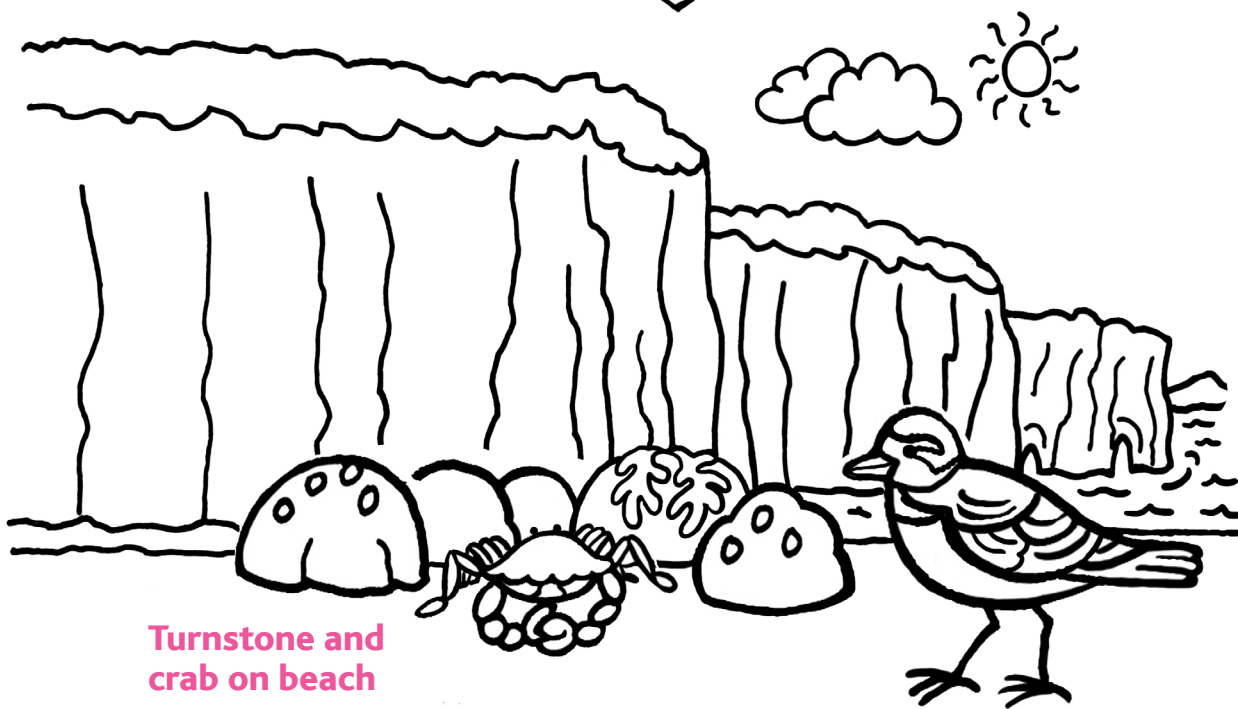
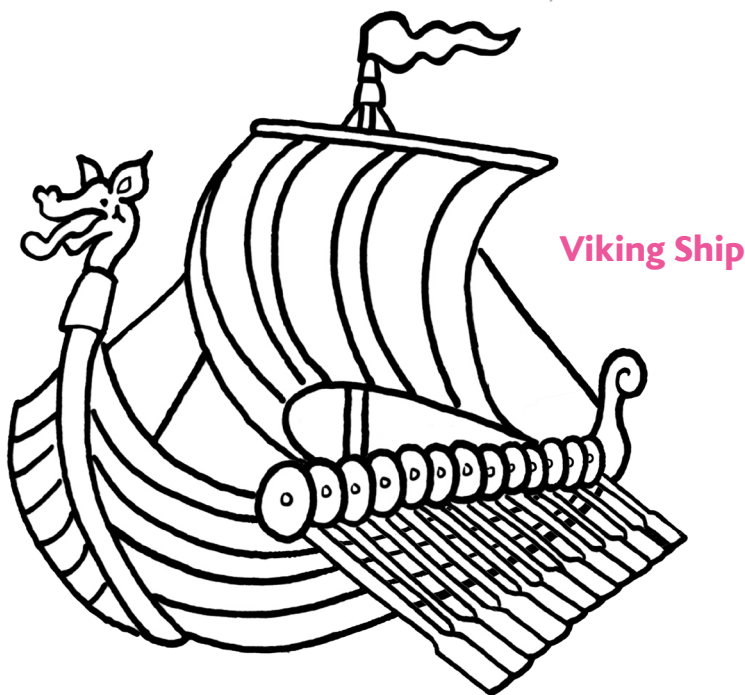
A collection of Thanet-inspired images for colouring-in, displays, postcards and other creative projects for fun and learning at the seaside.

KS1

KS2

Art

Resource 8: The Big Colouring-In Resource



Resource 8: The Big Colouring-In Resource

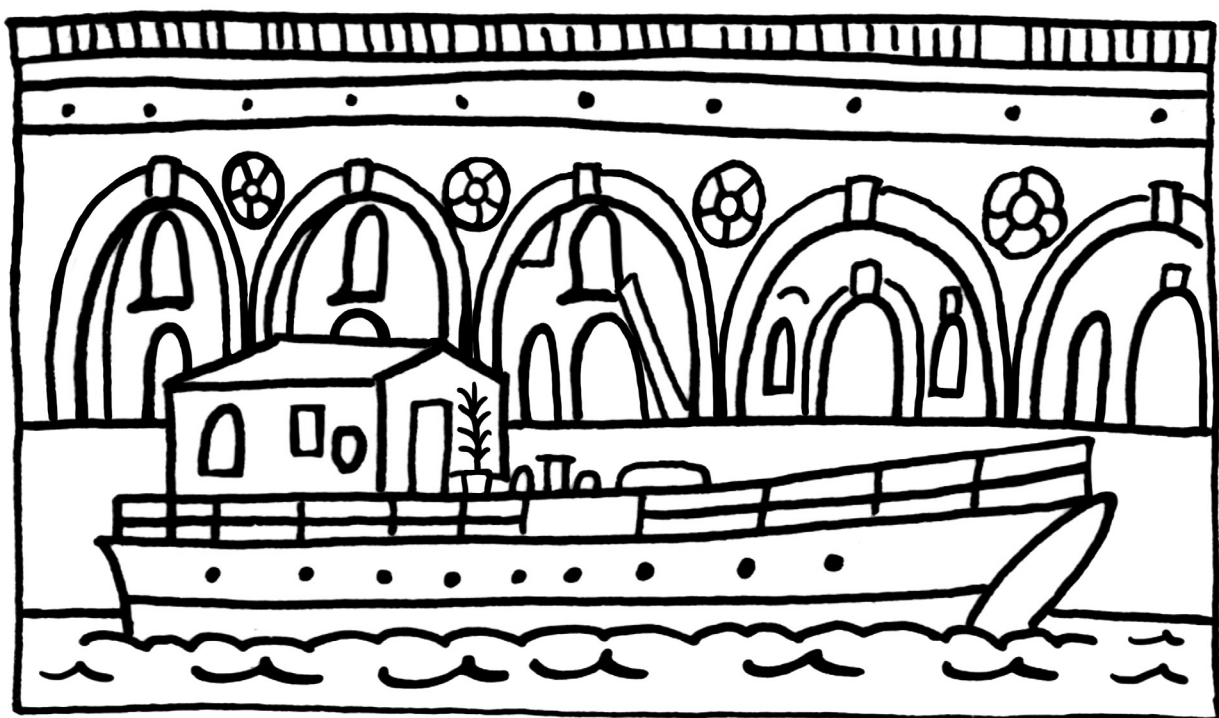
KS1

KS2

Art



Charles Dickens



Ramsgate Arches

Resource 8: The Big Colouring-In Resource

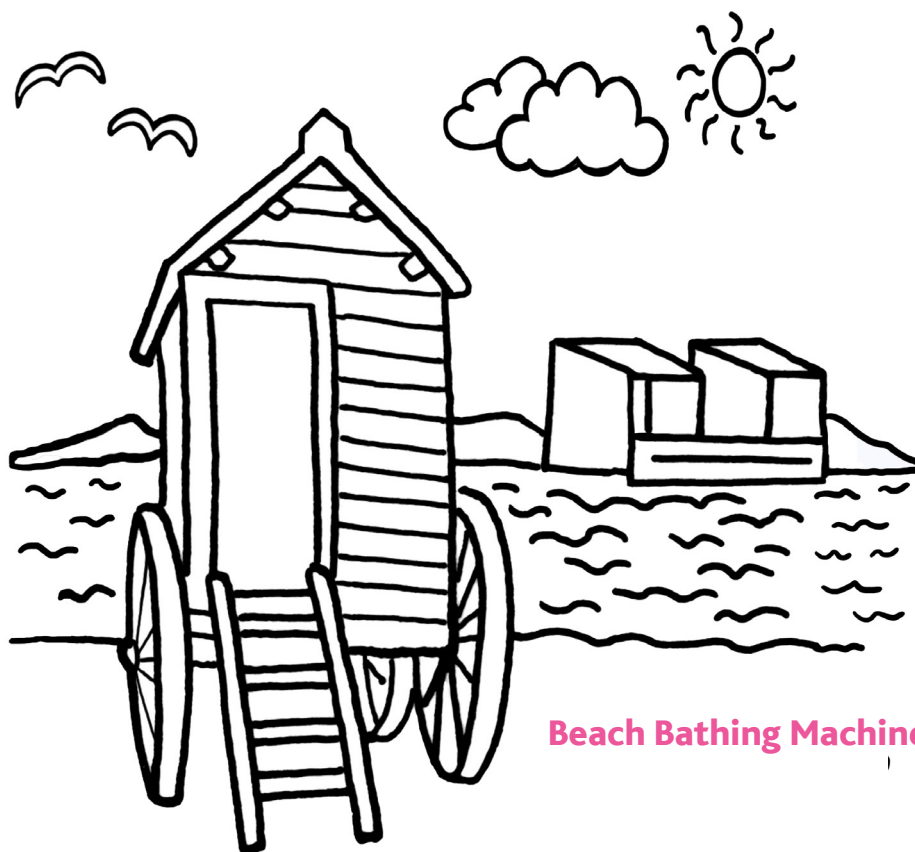


Resource 8: The Big Colouring-In Resource

KS1

KS2

Art



Beach Bathing Machine



North Shore Lighthouse

Resource 8: The Big Colouring-In Resource

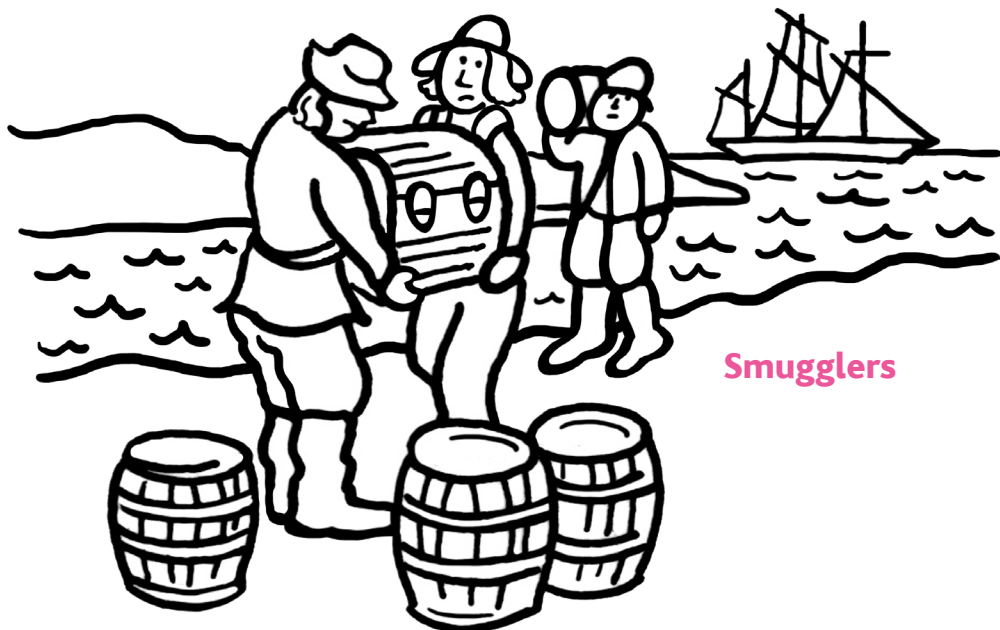


Resource 8: The Big Colouring-In Resource

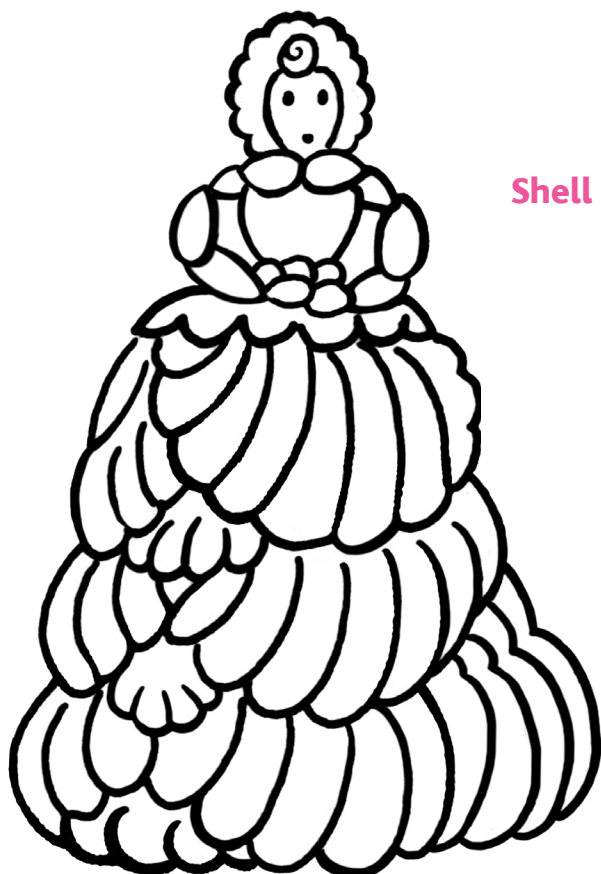
KS1

KS2

Art



Smugglers



Shell Lady sculpture

Resource 8: The Big Colouring-In Resource



Resource 8: The Big Colouring-In Resource

KS1

KS2

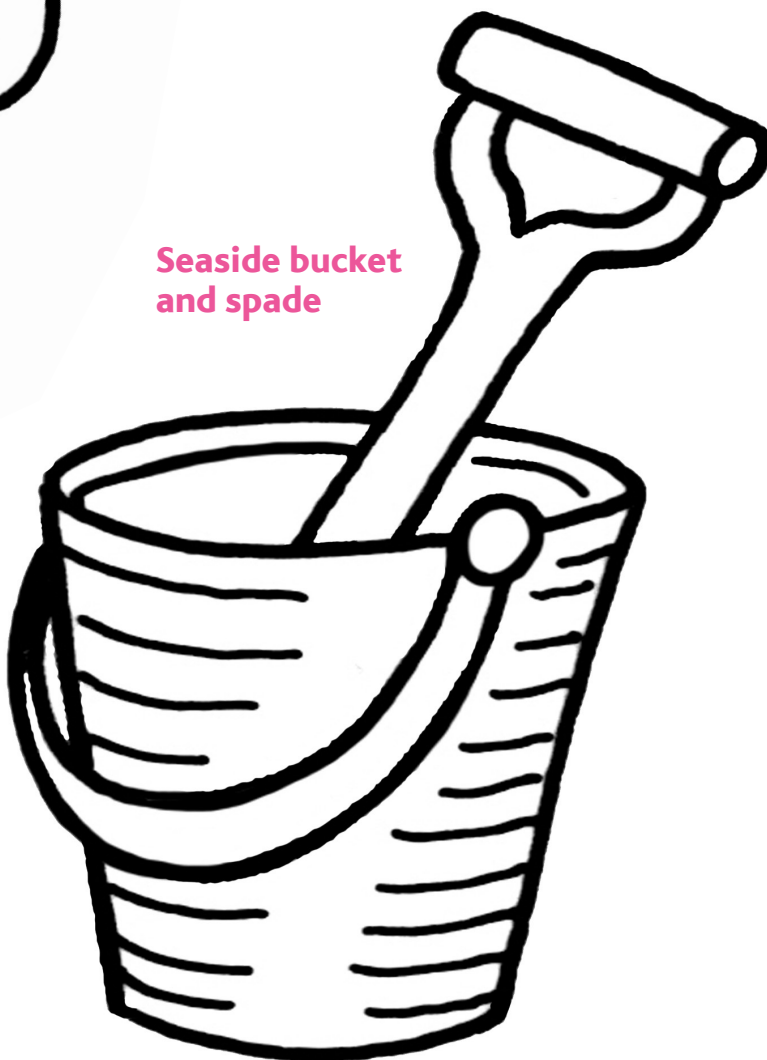
Art

Resource 8: The Big Colouring-In Resource

Icecream



Seaside bucket and spade



Resource 9: Instructions for making a kite

KS2

Design

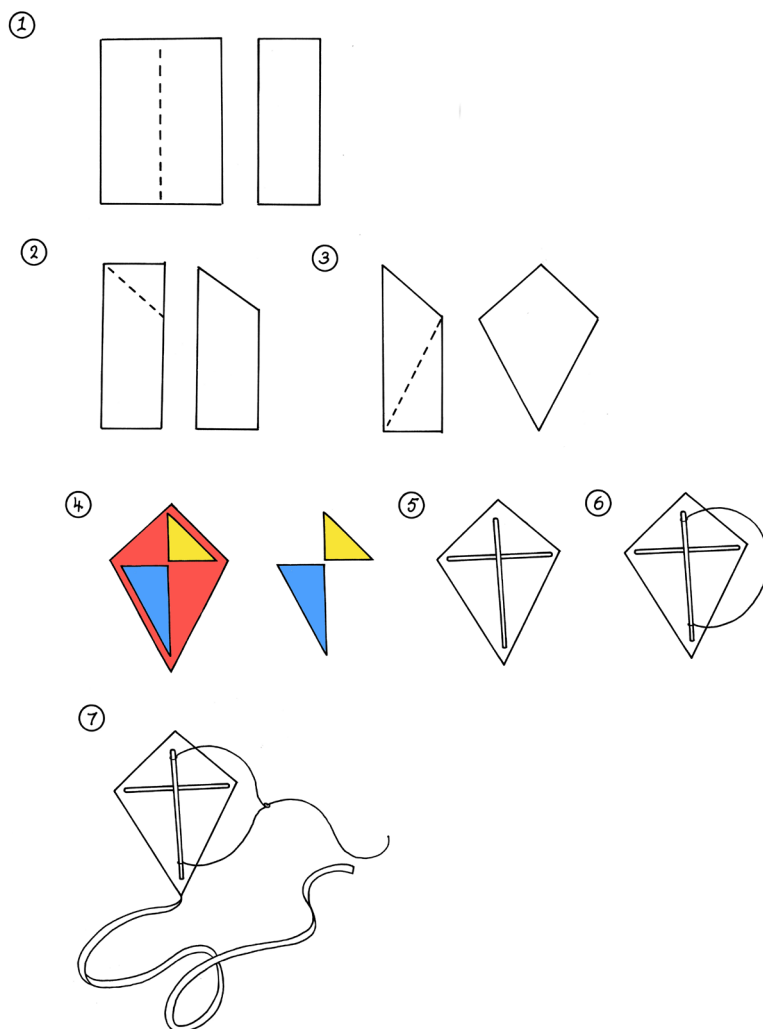
Resource 9: Go Fly A Kite
Instructions for making a kite

You will need:

- A4 sized craft papers in contrasting colours
- Drinking straws
- Glue
- Cotton
- Long strips of coloured paper or ribbons for the tail

How to make your kite:

- Fold A4 sheet of coloured craft paper in half length ways (Fig. 1)
- Fold the top corner into the middle and cut this corner off. Save the off cuts from the different coloured papers to use as decoration on your kite. (Fig. 2)
- Draw a line as shown in fig. 3 and cut along it. Again save the off cut pieces as decoration. Unfold to reveal a diamond shape kite.
- Use the off cuts to decorate one side of the kite (Fig.4)
- You now need to attach the straw struts. Cut the straws to length, turn the kite over and attach the straws with glue (Fig.5)
- Thread a length of thin string or cotton through the vertical straw and tie in a loop (fig. 6)
- Attach a long crepe paper tail (Fig.7)
- Attach a length of string to the loop and your kite is ready to fly.



Resource 10: Five Audio Stories

Here are five audio files featuring the following stories

KS1

Hermit Wants a Shell KS1

Hermit, like all hermit crabs lives in a sea shell to protect his soft body. But what happens when he outgrows his seashell home? Unable to venture out from beneath a protective rock Hermit sings a song in the hope that a helpful sea creature will find him a shell. Find out who appears in his rock pool and which one of the creatures is successful in the shell search.

Written by storyteller, Steve Manning.

KS2

Sun, Moon and Water KS1 & KS2

A myth from Africa explaining why the sun and moon climbed into the sky and also why the tides are affected by the moon.

Why the Sea is Salty KS1 & KS2

A traditional tale, found throughout Europe, explaining why the sea is salty. It features a magical, salt-grinding hand mill, a greedy sea captain and a wrecked ship.

Joss Snelling the Smuggler KS2

This story tells the tale of the infamous Battle of Botany Bay, Broadstairs, when Joss and his gang of smugglers were ambushed by the Excisemen. Few facts are known about this event so the story imagines the events that led to the skirmish and Joss's escape.

Written by storyteller Steve Manning.

The Smuggler's Leap KS2

This rhyming tale has been adapted from a story of the same name which appears in *'The Ingoldsby Legends'*, written by Kent cleric and novelist Richard Barham in the 19th century.

The tale tells the story of the feud between Smuggler Bill and Exciseman Gill which ends in an epic chase, the intervention of the Devil and a doomed plummet into a chalk pit!

Adapted and rewritten by storyteller Steve Manning.



English

Resources 10: Maritime Myths and Local Legends, Five Audio Stories

Resource 11: Historic Photographs

KS1

KS2

Geog

Resource 11: Holiday History,
Historic Photographs



Margate Shrimps, local swimmers, early 20th century



Margate Bathing Pavilion 1913



Margate holidaymakers early 20th century



Resource 11: Historic Photographs

KS1

KS2

Geog



Holidaymakers 1924



Grown-ups on donkeys early 20th century

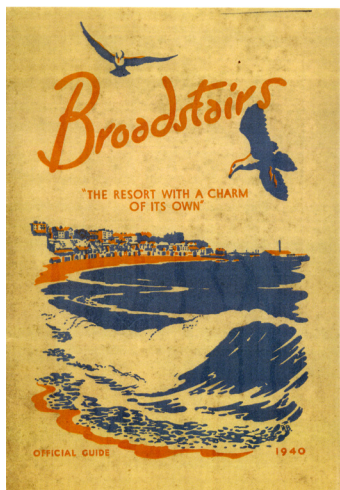
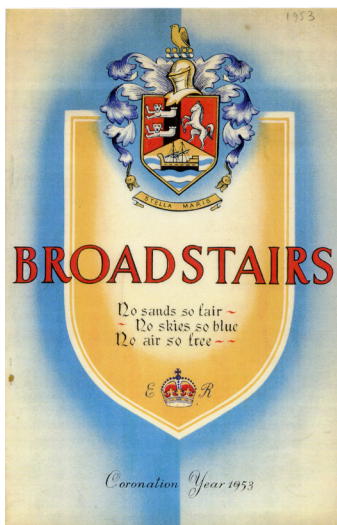
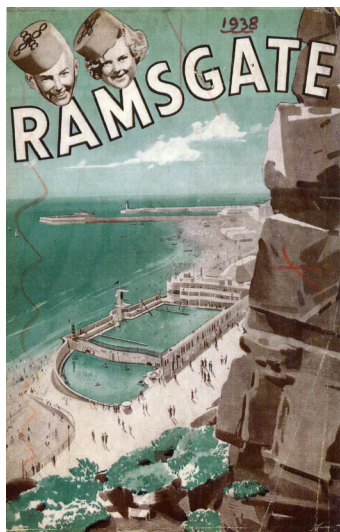


Bathing machine customers 1911

Resource 11: Holiday History,
Historic Photographs



Resource 12: Historic Brochures



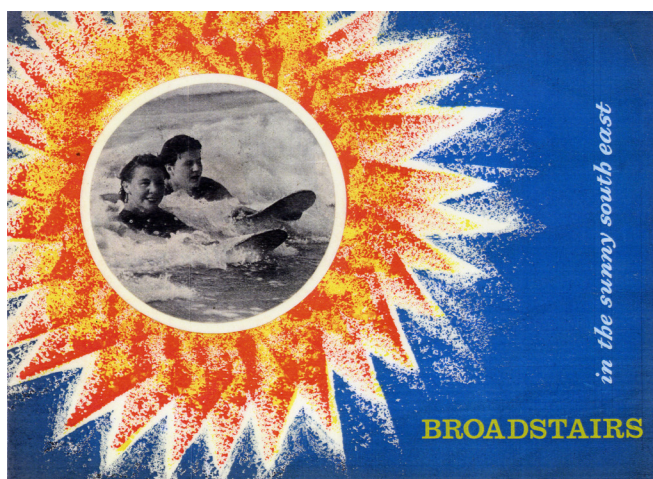
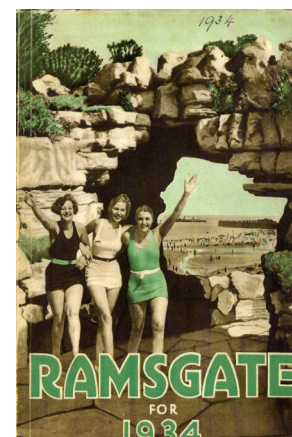
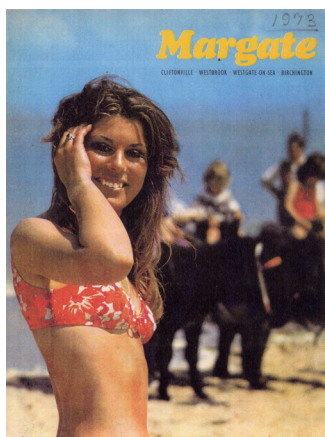
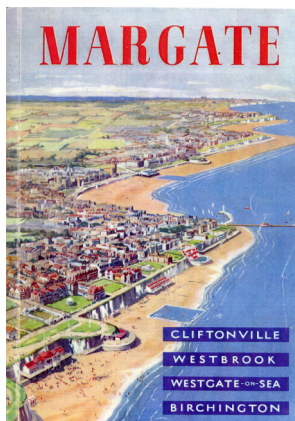
KS2

Art

Resource 12: Holiday History,
Historic Brochures



Resource 12: Historic Brochures



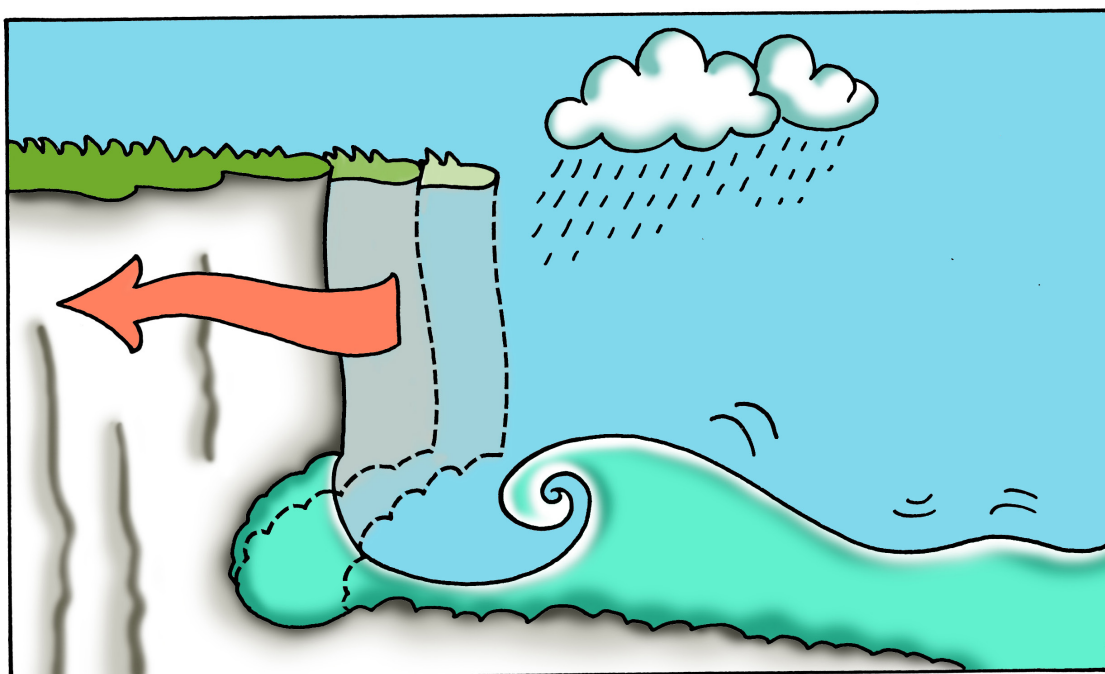
KS2

Art

Resource 12: Holiday History,
Historic Brochures

Cliff erosion

- Waves gradually begin to create a notch at the base of the cliff.
- The wave-cut notch undercuts the cliff.
- Eventually the cliff becomes unsupported and collapses into the sea.
- As the cliff retreats it leaves behind a wave-cut platform which can be seen at low tide. Look out for the wave-cut platforms at Minnis Bay and Joss Bay.



KS2

Geog

Resource 13: Changing Coasts,
Coastal Erosion Explained



Resource 14: Changing Coasts

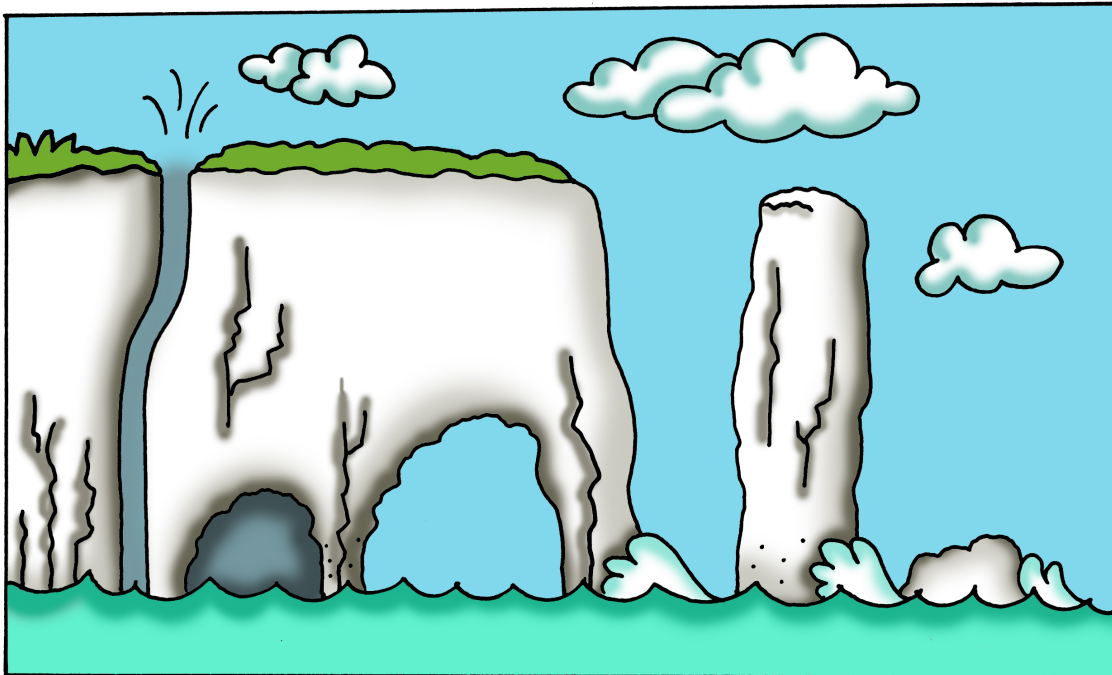
Cliff formations

- All rocks have lines of weakness.
- Waves find these lines of weakness and begin to erode them faster and deeper than the surrounding rock.
- These lines of weakness get enlarged and develop into small sea caves (there are examples at Kingsgate Bay and Pegwell Bay, although some of the Thanet sea caves can be the entrances to man-made tunnels.)
- If the caves are eroded on either side of a headland the sea eventually cuts through, forming an arch (a fine example of an arch can be seen from Kingsgate Bay).
- The rock at the top of the arch becomes unsupported as the arch is enlarged and eventually collapses to form a stack (cliff stacks can be seen at Botany Bay).
- The stack is slowly eroded until only a stump remains which in turn eventually disappears.

KS2

Geog

Resource 14: Changing Coasts,
Cliff Formations



Resource 14: Changing Coasts



Wave-cut arch and wave-cut platform at Kingsgate Bay.

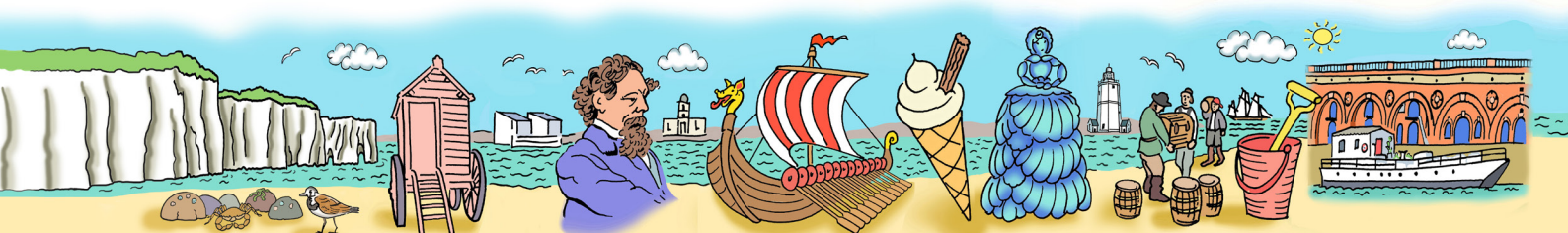


Chalk stacks at Botany Bay

KS2

Geog

Resource 14: Changing Coasts, Cliff Formations



Resource 15: If Chalk Could Talk

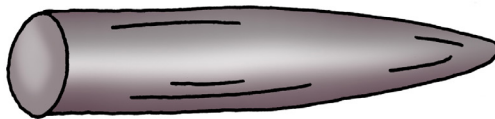
Some of the most common fossils on Thanet.

Micraaster and Echinopsis are the most common sea urchin fossils found on the Thanet Coast. We also have Belemnite fossils which are the backbone of a squid like animals. You can also find bits of broken shell (Inoceramus) and even the occasional rare ammonite!

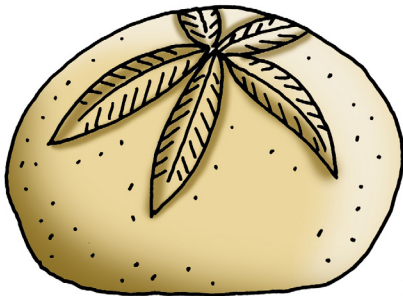
KS1

KS2

Geog



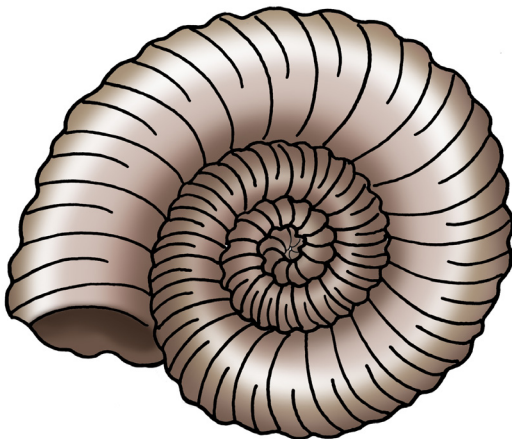
Belemnite



Micraaster



Echinopsis



Ammonite

Resource 15: If Chalk Could Talk,
Common Chalk Fossils



Resource 16: What's That Ship?

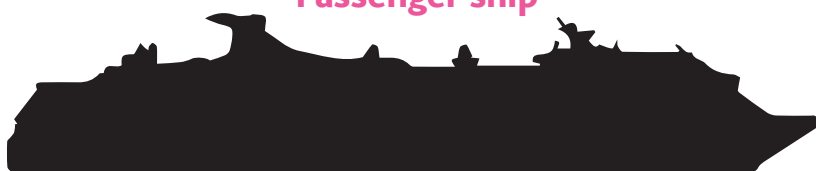
KS1

A basic guide to some of the larger ships you might see from the beach during your visit.

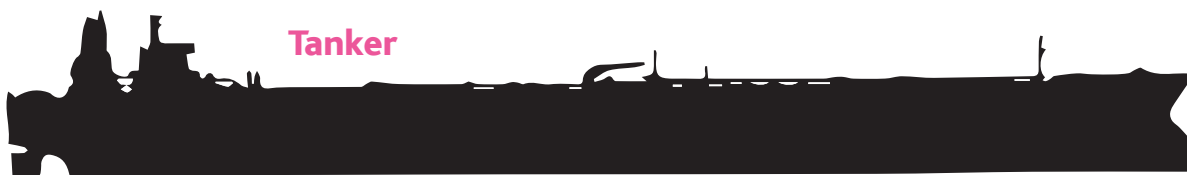
Container ship



Passenger ship



Tanker



Fishing boat



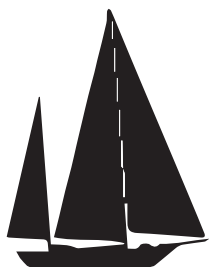
Tug



Navy ship



Yacht



Pilot Boat



Geog

Resource 16: What's That Ship?
Identification Sheet

