

Resource 4: Identification Sheet

Use this sheet to help identify some of the objects you might find along the strandline. The strandline is a line left on the beach by the high tide. It is often a line of seaweed and other materials that are washed up onto the beach by the tide.

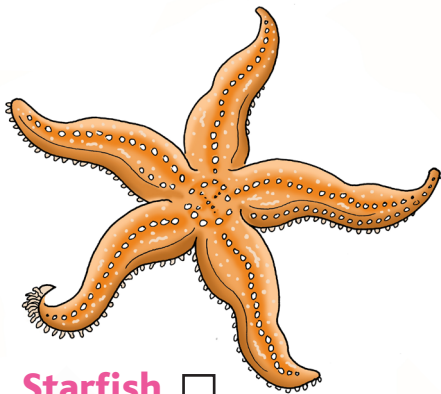
Remember, if you are not sure about something – DON'T PICK IT UP!

KS1

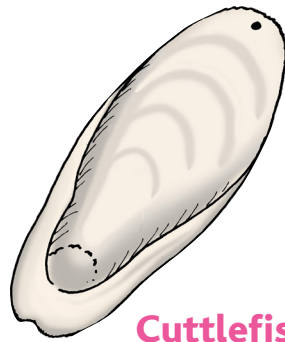
KS2

Science

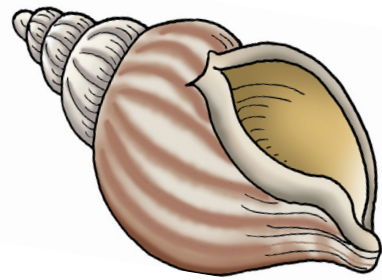
Resource 4: Beach I Spy
Identification Sheet



Starfish



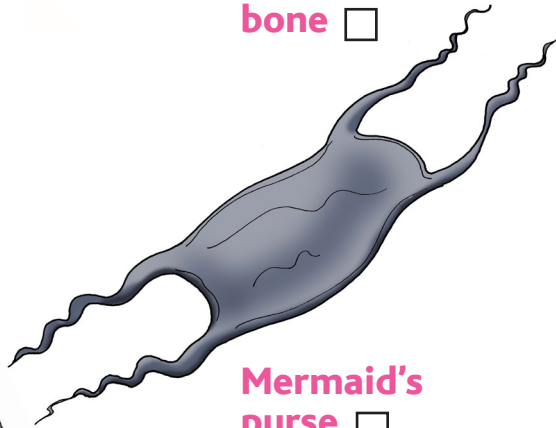
Cuttlefish bone



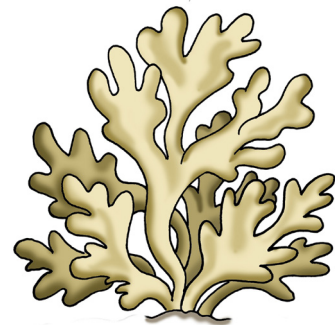
Whelk shell



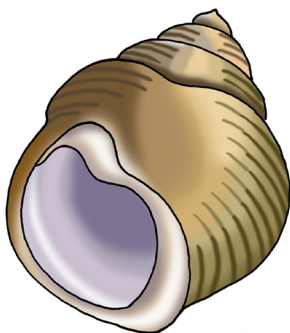
Gull feather



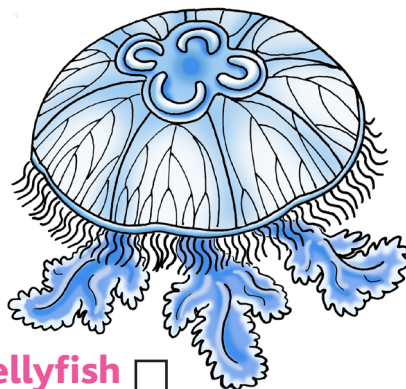
Mermaid's purse



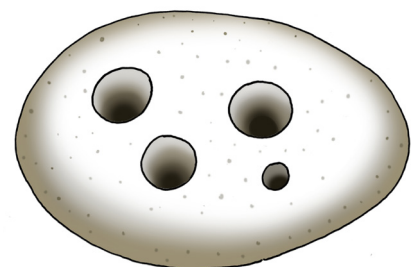
Hornwrack



Edible Periwinkle



Jellyfish



Piddock
burrow holes

